



KRAISSL QUARTERLY

Published By

THE KRAISSL COMPANY

INCORPORATED

PUMPS-SEPARATORS-ENGINEERING EQUIPMENT

HACKENSACK, NEW JERSEY



Volume 30

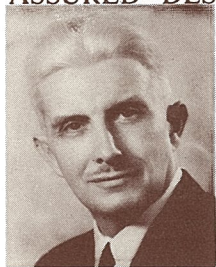
July 1985

No. 3

HIGH FRONTIER

FREDERICK KRAISSL, JR., PhD., P.E.
Chairman, The Kraissl Co., Inc.

Those of us who sincerely wish to preserve this country for ourselves and posterity have an alternative to the MAD Philosophy which is truly incomprehensively insane. The word MAD originates from *MUTUAL ASSURED DESTRUCTION and is aptly named.



CONSULTING
ENGINEER
KRAISSL ASSOCIATES

There might have been some justification for its being believed in the beginning but with a would be world conquer building underground

shelters, it is ridiculous to assume this is being financed to perpetuate a myth.

It is not always wise to disclose details but enough is essential to be convincing and justify this "Freedom Insurance." When you come to think about the matter we spend fortunes on ordinary insurance and our confidence in the agent who sells us the policy. Following this same line of reasoning we should have more confidence in a retired Lt. General who would share with us the result of a disaster if anything went wrong, which would not necessarily be true of the firm who supplies ordinary insurance.

Very little publicity has been granted to the reported shoot down in June 1984 of an ICBM war head in space using off the shelf technology. This should prove that it can be done and explains why there is so much activity by opponents of High Frontier to this approach. It is High Frontiers proposal that our strategy should be revised and that our purpose should be MUTUAL ASSURED SURVIVAL. It constitutes its own Arms Control Measure, in that it removes the nuclear ballistic missile as an absolute weapon.

It seems that this sword of Damocles hanging over the heads of current and future Americans should be removed and that the era of terror should be ended.

After all, our purpose is to live in peace with all nations and the right of self defense is inherent with all who survive. Each species has its own defense and human rights seems to be what we are willing to export but it should be sold not forced.

I vote for High Frontier.

POLITICAL PARTIES ARE FOR POLITICIANS

A political party should be the agency by which the voter gets the candidate that nearest matches his idea of the employee he wants in each office. Make no mistake about it, all the hoopla prior to the election that is generated is just as much self appraisal as the applicant that walks into your office hoping to qualify for the job for which you may have written the advertisement.

I am a states rights man first, last and forever, I do not believe the Federal Government should be entrusted with anything the states can do for themselves. They can usually do it better as they are more closely in touch with the grass roots situation and conversant with the local problem. I think that if I were active in the era of the war between the states, I would have been a Democrat as this party was then the party of states rights. Now, the Democratic Party is invading states rights more than the former Federal Party ever dreamed up and the championship of states rights is in the Republican Party.

It is dangerous to let ones self get involved in political parties. It blinds one to the collective effect of party action. There should be no party loyalty on the part of the voter. The trouble is parties gang up and take credit for action which in many cases a free thinking member initiates.

There might be justification for a conservative party and a liberal party. Even here there might be trouble with semantics. According to my definition a conservative lives within his or her budget with exception of defense. A liberal is anything else.

I only know and recognize a single qualification, a patriotic American. There was a time in our history when we always got a Patriotic American, whether Republican or Democrat. Please God let us return to this situation.

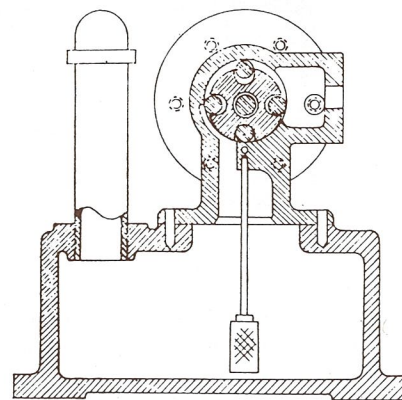
POSITIVE DISPLACEMENT PUMPS

Our Kraissl Quarterly is designed to bring you news concerning all products on which we have standardized or which we could supply if you need them. We have bulletins on most of the illustrated lines which go more into detail. Please request any that may be of interest, and bear in mind that our purpose is to make available the best design for each purpose and explains our diversification.

Two issues in the recent past have given information on our transfer valves and our separators, one issue devoted to each. This issue is devoted to displacement mechanisms or pumps for different services.

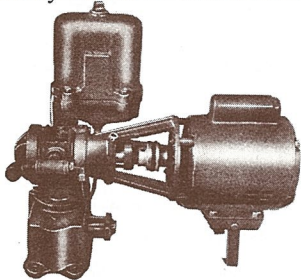
Air Pumps

Many people do not appreciate that a Rotary Air Pump can be a vacuum pump or a compressor depending on which is the working port. We have two basic designs, the roller displacement mechanism designated our Class 21 series and a blade mechanism designated our Class 25 series.



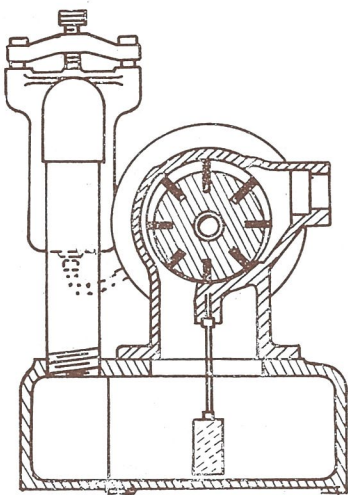
Class 21-Series - Is a mechanism that is hard to wear out. It is ideal for handling corrosive gases or vapors that clog up or gum up other mechanisms. It is and has been used to pull gases from recording apparatus, actuate

vacuum filling machines and all around suction applications. It's limitation is the one line seal of the roller which makes its upper limit approximately 25" of mercury vacuum and corresponding lower pressure. If you operate in a lower vacuum range this mechanism could be of interest as it has many desirable characteristics.



Class 25 Series - The blade mechanism produces a better seal than the roller design and has a more universal application. Both use our force feed system of lubrication from an underneath oil reservoir like an automobile but in combination the blade mechanism produces a higher vacuum and corresponding pressure. Standard units can be supplied for 28" of mercury vacuum and in the vicinity of 50 psig pressure depending upon service and cooling conditions. If there is a quantity application for higher vacuum or pressure, it may be in the area of our Class 17 or 19 Design.

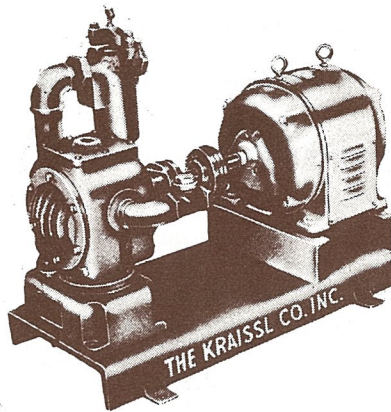
CLASS 25 MECHANISM



Just to let those interested individuals know that this is not all theory, we were privileged to supply our Kraissl air pumps to several systems installed by the Globe Automatic Sprinkler Company. We do not, nor should we have expected to have the addresses of where these air pumps were installed, but to the best of our memory these were before World War II, and we have every reason to believe that if our units had worn out or needed repair parts we would have been contacted. The longevity of Kraissl air pumps is due to our forced

feed system of sealing and lubrication from the built in oil reservoir which is an integral part of the pumps.

Automatic sprinkler companies may find it to their advantage to contact us.

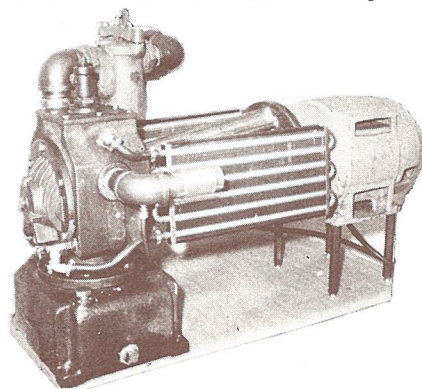


our latest developement is our Class 25WJAC assembly which was made available for ejector service where water cooling is not available.

The design illustrated, shows how this has been done. The pump is motor mounted and the heat exchangers are attached to the motor mount. The liquid coolant operates on thermo syphon action and a bird cage type fan keeps the air in circulation so the ambient temperature is the basis for heat exchange.

While we consider this an improvement over direct fan cooled pumps, it is emphasized that water cooling from a water circulation source is the most efficient as water circulation can continue over a period when the pump is idle but it does provide many of the advantages of liquid cooling including the addition of anti-freeze solutions where this is climatically necessary.

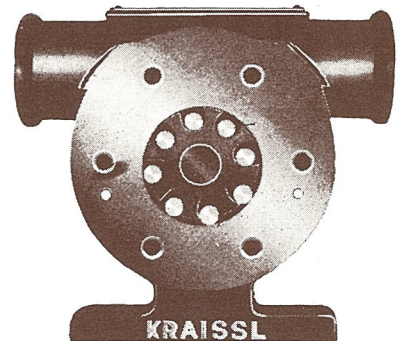
With the expense of new patterns skyrocketing, we only propose to be guided by customers who desire this equipment and have initiated this model in sizes most used in the past.



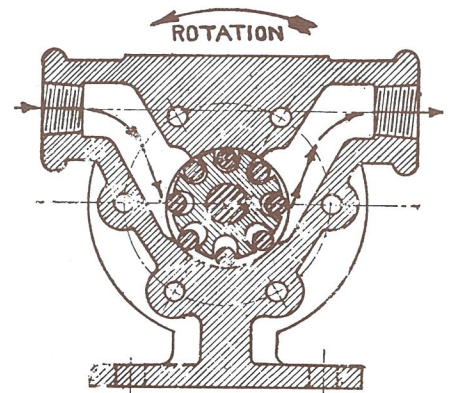
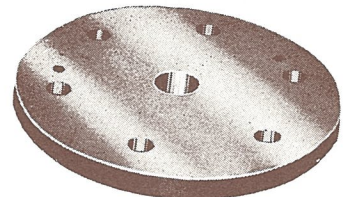
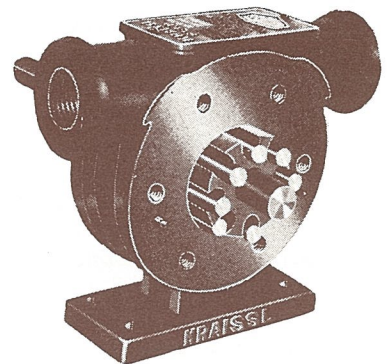
Liquid Pumps

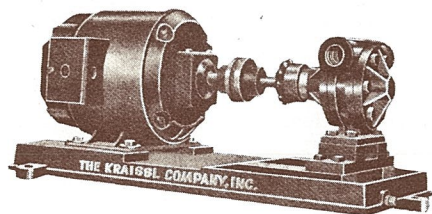
Because of the preponderance of centrifugal pumps on the market, we have limited our manufacture to positive displacement designs or special centrifugals for which there are few standardized units.

Class 50 Design - Is our roller pump converted to liquid service with appropriate design changes. it is an ideal dirty oil pump. The lack of close clearances combining both the characteristics of positive displacement and centrifugal designs make it desirable for many applications where iron and steel materials of construction are satisfactory. Ask for Bulletin Number A-1330.



It is not planned to offer the Class 50 design on a single lot basis. Where a quantity of pumps are needed to handle products with some lubricity, the Class 50 series should be considered. We have brochures telling their characteristics and will be glad to send one on request.

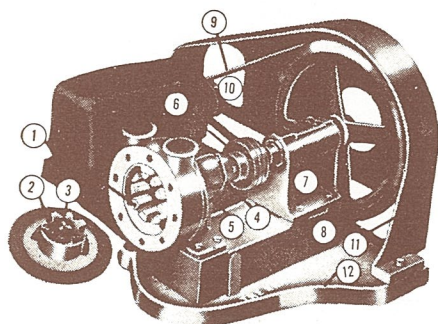
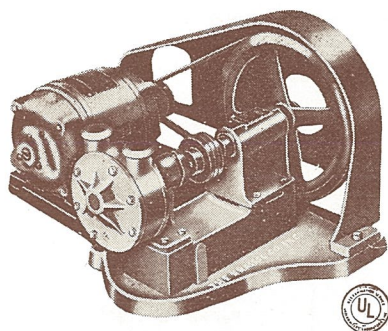




Best of all we believe it can still be manufactured at 10% less than the equivalent capacity of our Class 60 design where direct connected pumps can be used.

Does this not justify consideration?

Class 60 Design - This is the work horse of fuel oil burning systems. It has high suction characteristics. The V Belt is carried on separate ball bearing lubricated transmission support directly connected to pump by loose coupling precludes side pull on the pump shaft minimizing pump bearing and packing distortion. Return seal stuffing box minimizes leakage. By changing pulleys usually available at most hardware stores best speed for various viscosity oils can be obtained. Usually supplied with pulleys for 400 RPM use on heavy oils. Should be considered for coal slurries with minimum abrasion characteristics. Listed by Underwriters Laboratories and New York Board of Standards and Appeals. Ask for Bulletin No. A-1193.



FEATURES

1. Internal gear design provides high suction lift characteristics.
2. Hardened idler insures minimum wear.

3. Integral bearing and idler assembly.

4. Adjustable stuffing box fitted with return seal and soft packing keeps shaft wear and chance of leakage to a minimum.

5. Interchangeable return seal design allows change of rotation in field.

6. Flexible coupling isolates pump bearings from pulley loads.

7. Rugged ball bearing unit insures bearing alignment and large grease reservoir with provision for re-lubrication minimizes maintenance.

8. Bearing unit support cast integral with bed plate reduces vulnerability to distortion.

9. Adjustable V belt drive absorbs shock loads and provides quiet operation with low replacement cost.

10. Varied pulley combinations for proper viscosity speed relationship.

11. Cast metal belt guard protects personnel from exposed moving parts and eliminates chance of bending, denting or sharp edges.

12. Cast metal bed plate with drip collecting bead around edge insures rigid support and minimum chance of bed plate bending or distortion.

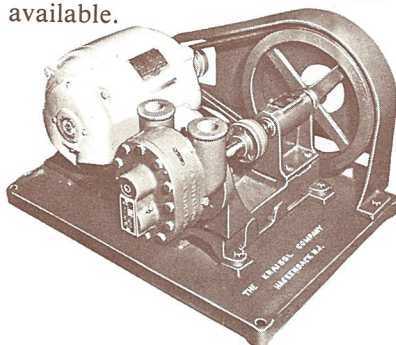
13. Pumps are individually tested in accordance with Underwriters' requirements.

14. Approved by the Board of Standards and Appeals for use in New York City under Cal. No. 517-53-S.A.

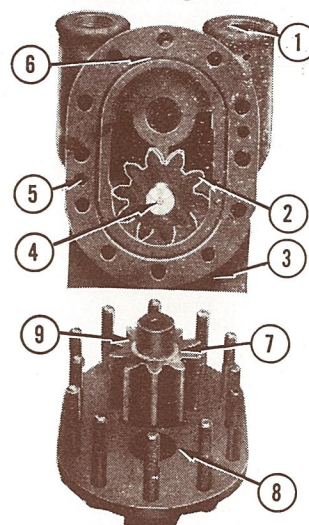
Class 60H Design - This is a look alike pump that usually cannot be identified except by name plate but internal bearing construction is different permitting operating pressures of fifty percent increase. It can replace many applications that formerly used our Class 66 design.

Class 66 Design - This is an external gear pump that is now limited to the smallest three sizes as the larger sizes are in most cases replaced by our 60H series. Ask for Bulletin A-1847

Originally designed for supplying oil to mechanical atomizing oil burners, these pumps are not limited to this application. In actual tests at our plant a Class 66 Pump outlasted four other pumps on the same application for which we had used a competitive design before the 66 Series was available.



MECHANISM

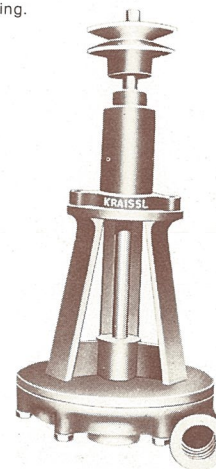


FEATURES

1. Ports in end plate provide easy access to pump interior and parts replacement without piping disassembly.
2. Pyramid tooth form provides maximum gear strength.
3. Interchangeable mounting with corresponding division or size Class 60 Series pump head.
4. Integrated Rotor and shaft provides strong assembly with no weakening due to internal keys or pins.
5. Dowel pin alignment facilitates accurate assembly with proper working clearances.
6. Grooves vented to pump suction eliminate gaskets and insure face and end plate sealing.
7. Bearings are assembled close to load to minimize shaft deflection. Provision is made for renewal of lubricant.
8. Bearing seals divert extraneous matter from main bearings.
9. Hardened idler increases pump life.
10. Interchangeable return seal vents stuffing box to pump suction to minimize chance of shaft leakage while also providing simple means for change of rotation in the field.

SPECIAL CENTRIFUGAL PUMPS

For original equipment applications where standard units cannot be used. Example vertical drive pump for sump mounting.



SALES REPRESENTATION

HOME OFFICE

We have reserved the areas of Connecticut, Metropolitan New York, including the Hudson Valley, Long Island, New Jersey and Eastern Pennsylvania less Philadelphia District for coverage by Kraissl Company personnel.

Northeast Region

Boston-Cooper Corp.
Manor Parkway
Salem Ind. Pkwy, Salem, N.H. 03079
Capt. C. V. Watson
Maiden Cove Lane
Cape Elizabeth, Maine 04107

Eastern Region

Filtration Unlimited
Buffalo & John Streets
Akron, N. Y. 14001
Jobe & Co., Inc.
1815 Edison Hwy.
Baltimore, Md. 21213
Daily Associates
8 E. Mt. Vernon Ave.
Haddonfield, N. J. 08033
Fluid Conditioning Equip. Co.
28 Van Tassel Lane
Ballston Spa, N. Y. 12020
R. C. White, Div. Weldment Corp.
P.O. Box 267
Bethel Park, Pa. 15102

Southeast Region

Power Equipment Co.
1307 West Main Main St.
Richmond, Va. 23201
Dillon Supply Company—Main Office
Box 1111, S. West Street
Raleigh, N. C. 27602
Dillon Supply Company
Durham, No. Carolina 27702
Dillon Supply Company
Rocky Mt., No. Carolina 27801
Dillon Supply Company
Goldsboro, No. Carolina 27530
Dillon Supply Company
Charlotte, No. Carolina 28201



THE KRAISSL COMPANY

INCORPORATED

HACKENSACK, NEW JERSEY 07601

RETURN POSTAGE GUARANTEED



YOUR
COPY
OF

**KRAISSL
QUARTERLY**

Boiler Supply Company
P.O. Box 40225
Nashville, Tenn. 37204
601 Van St., N.W.
Knoxville, Tenn. 37921
Applied Engineering Co., Inc.
P.O. Box 1327
Orangeburg, S.C. 29115
W. T. Meyer Co.
5800 Coach Gate Wynde
Louisville, KY. 40207
Spotswood Parker & Co.
721 Miami Cir. NE, Atlanta, Ga. 30324
Proctor-Himic Co., Inc.
P. O. Box 36279
Birmingham, Alabama 35226
R.A. Litkenhaus & Assoc., Inc.
P.O. Box 16323
7825 Baymeadows Way, Suite 106B
Jacksonville, Florida 32216
Phone: (904) 373-3536
Florida Filters, Inc.
P.O. Box 370985
Buena Vista Station
Miami, Florida 33137
Florida Filters, Inc.
223 S. 13th St.
Tampa, Florida 33602

North Central Region

Comb & Groves, Inc.
336 W. Eight Mile Rd.
Ferndale, Mich. 48220
Hettler Equipment Co.
P. O. Box 1904
Grand Rapids, Mich. 49501

Central Region

M. Huffman Sales Co.
3404 Upton Ave.
Toledo, Ohio 43613
W. G. Taylor Co.
1900 Euclid Bldg., Cleveland, Ohio 44115
The Jordan Engineering Co.
P. O. Box 30017
Cincinnati, Ohio 45230
T. A. Heidenreich Co., Inc.
2525 E. 54th Street
Indianapolis, Ind. 46220
Tobra Engineering Co.
5438 Milwaukee Ave.
Chicago, Illinois 60630
A. K. Howell Co.
7603 Forsythe Ave.
St. Louis, Mo. 63105
Filtr Tech Systems
8535 Duluth St.
Golden Valley, MN 55427

South Central Region

Creole Engineering Co.
P.O. Box 23159, Harahan, La. 70183
Creole Engineering Co.
11724 Industriplex Blvd.
Baton Rouge, La. 70809

Jack Tyler Engineering Co.
6112 Patterson Ave.
Little Rock, Ark. 72209
Albert Sterling & Assoc., Inc.
5613 Winsome Lane
Houston, Texas 77057

Northwest Region

Baxter-Rutherford Inc.
P.O. Box 24324
911 South Homer Street
Seattle, Washington 98134

Western Region

Jay Besore & Assoc.
1690 Plymouth St.
Mountain View, Cal. 94043
Power Engineering Co.
P. O. Box 1777
Salt Lake City, Utah 84110
Killam Gas Burner Co.
1240 S. Bannock St.
Denver, Colorado 80223

Southwest Region

Wagner Hydraulic Equip. Co.
2089 Westwood Blvd.
Los Angeles, California 90025
Engineered Sales Company
5150 N. 16th Suite C-156
Phoenix, Arizona 85016
Phil-Lin Associates, Inc.
13344 Camino Del Norte
Albuquerque, New Mexico 87123

Canada—Ontario and Quebec Provinces

Kirk Equipment Ltd.
7435 Chester Ave., Suite 2
Montreal, Quebec, Canada H4V1M4
Kirk Equipment, Ltd.
1885 Wilson Ave., Suite 206
Weston, Toronto, Ontario, Canada M3H 1T9

Canada—British Columbia Province

Les Hall Filter Service Ltd.
346 E. Esplanade
North Vancouver, B.C. V7L 1A4

Canada—Alberta Province

H.F. Clarke Limited
5220-1A Street S. E.
Calgary, Alberta, Canada T2H 1J1

Hawaii

Foster Equipment Co.
P. O. Box 30188
Honolulu, Hawaii 96820

Mexico

Ingenieria Termio Industrial, S.A.
Iztaccihuatl No. 63, Col. FI
Delegacion A. Obregon
Mexico, D. F. Mexico 01030

BULK RATE
U. S. POSTAGE
PAID
Permit No. 1268
Hackensack, N. J.